



Chancellor
Institute

FT. LAUDERDALE, FL

2025-2026 Annual Campus Crime & Safety Report

Table of Contents

2025 ANNUAL SECURITY REPORT	4
Campus Safety & Security	4
SAFETY TIPS	4
RESOURCES	4
DIRECTORY OF SAFETY & PERSONAL SERVICES	6
Abuse, Rape, Assault or Violence	6
Dependence	6
Law Enforcement	7
Fire Department.....	7
Suicide.....	7
PREPARING THE ANNUAL DISCLOSURE	9
THE FLORIDA DEPARTMENT OF LAW ENFORCEMENT.....	10
Florida Sexual Offenders and Predators.....	10
TITLE IX COMPLIANCE.....	10
Title IX Policy Statement.....	10
Discrimination.....	10
Title IX Officer.....	11
Sexual Harassment.....	13
Unwelcome Conduct.....	13
Gender-Based Harassment.....	14
Investigations of Complaints.....	14
Implementing Provisions/Policies.....	15
CI Notice of Petitioners Rights Under the Violence Against Women Act.....	17
Definitions.....	18
How to file a restraining order:	25
Disciplinary Procedures Following a Complaint	27
Risk Reduction/Warning Signs of Abusive Behavior.....	30
TIMELY WARNING POLICY	33
Timely Warnings.....	33
Procedures	33
POLICY REGARDING ILLEGAL DRUGS AND ALCOHOL	34
POLICY REGARDING EMERGENCY NOTIFICATION AND RESPONSE.....	35

Policy 35

Definitions..... 35

Procedures/Guidelines Emergency Notification..... 35

Communication Methods and Operations 36

School’s Community 37

MAP 39

CAMPUS CRIME STATISTICS 40

2025 ANNUAL SECURITY REPORT

Campus Safety & Security Chancellor Institute

For your information, a copy of CI Annual Campus Safety and Security Survey is referenced below. This report is distributed in compliance with the “Crime Awareness and Campus Security – Clery Act.”

CI’s commitment to safety and security includes:

- Providing a secure and crime free environment for students, faculty and staff;
- Performing regular evaluation of security programs; and
- Monitoring and following up on each crime reported at each of CI’s campus locations.

We believe students, faculty and staff behavior plays an important role in all aspects of our lives, and we encourage all students, faculty, and staff to accept responsibility for their own security as well as the security of other members of the CI community.

SAFETY TIPS

Report strangers and suspicious behaviors: Be sure to report anything suspicious on or around the campus to supervisory personnel.

Park your vehicle in a well-lit area and be sure to have your key in your hand.

When walking to your car, do not walk alone; use the buddy system.

Once you are in your car, lock your doors immediately.

RESOURCES

Always stay alert and

be aware of your surroundings.

Campus President: 954-400-0624 | Title IX Coordinator: 954-400-0624

DIRECTORY OF SAFETY & PERSONAL SERVICES

Abuse, Rape, Assault or Violence

If in immediate danger call 911

Broward County Victims Hotline: (954) 761-1133

Domestic Violence Hotline: 800-799-SAFE (7233)

Elder Abuse Hotline: 800-252-8966

Florida Child Abuse Hotline: 800-962-2873 | reportabuse.dcf.state.fl.us

Sexual Assault Hotline: 800-656-4673 | www.rainn.org

Rape and Incest National Network Crisis Hotline: 800-656-4673

Rape Crisis Hotline: 888-956-RAPE (7273) | www.fcasv.org

Center for Information & Crisis Services: 2-1-1 | www.211palmbeach.org



2-1-1 is a service of The Center for Information & Crisis Services that provides information, referral, crisis intervention, supportive counseling, and suicide intervention, via the telephone 24 hours a day/365 days a year.

CALL: 211 or 866-882-2991

Dependence

Drug Information Treatment & Referral Hotline: 800-662-HELP (4357)

Alcoholics Anonymous (South Palm Beach County): 561-276-4581 | www.aa.org

Alcohol Hotline Support & Information: 800-234-0420

Alcohol Abuse & Crisis Intervention: 800-234-0246

Center for Drug Abuse Prevention: 800-729-6686

Cocaine Hotline: 800-COCAINE (262-2463)

Drug & Alcohol Treatment Routing Service: 800-662-HELP (4357)

Law Enforcement

Fort Lauderdale's Police Department: (954) 828-5700

Fort Lauderdale Police **EMERGENCY**: 9-1-1

Crime Stoppers: 800-458-8577

Fire Department

Fort Lauderdale Fire Department: (954) 764-4357

Suicide

Suicide Prevention Lifeline: 800-273-TALK (8255)

Mental Health Association Help Line: 800-333-4444

Suicide Hotline: 800-SUICIDE (800-784-2433)

As you read the following report, comments, questions, or concerns may be addressed to:

Chancellor Institute

Attn: Dr Tamecia Scott

2900 W Cypress Creek Rd, Suite 7

Fort Lauderdale, FL 33309

954-400-0624

tscott@ichancellor.edu

A statement of current policies regarding procedures and facilities for students and others to report criminal actions and policies concerning the college's response to such reports:

Students, Faculty or staff who wish to report criminal actions, should immediately contact the responsible supervisory personnel. The criminal action should then be immediately reported by students, faculty or staff to the local authorities for assistance and /or investigation. The incident should be reported as soon as possible to the Campus President, who will follow-up on the report personally or assign responsibility to another appropriate administrator to follow-up and report on the outcome as well as any preventative or other actions taken to ensure the safety and security of all staff, faculty and students.

PREPARING THE ANNUAL DISCLOSURE

The Executive Assistant for Academic Affairs has the responsibility of gathering the data used to prepare the annual campus crime statistics. The data is obtained from reports made to the local law enforcement. Campus crime data is gathered the same day that it is reported. Data is obtained annually from local law enforcement and combined with the data gathered by staff, and internet research at the CI locations. The resulting data is used to prepare the annual crime statistics report. Please see the map of the geographical area on page 37 of this document.

A statement of current policies concerning campus law enforcement, including the enforcement authority of institutional security personnel and policies that encourage prompt reporting of all campus crime to the campus police and local police:

CI is a non-residential school and does not have a campus police force. Therefore, all crimes are reported to local authorities as described in the first section regarding policies and procedures to report crimes. CI does not utilize pastoral or professional counselors for this process.

VOLUNTARY CONFIDENTIAL REPORTING: Since CI is a non-residential school, and does not have a campus police force, all crimes must be reported to local authorities as stated above. Local law enforcement will allow a victim or witness to report crimes on a voluntary and confidential basis.

A statement of programs available to students and employees on campus security, personal safety and crime prevention:

CI provides information on personal safety and crime prevention. A directory of services within the community to assist those who have suffered from a criminal act is available at CI's administrative office at 1201 W. Cypress Creek Road, Suite 101, Fort Lauderdale, FL 33309. These services are usually free and are provided by the community. During the orientation of students, faculty and staff, procedures are outlined to cover the reporting of all criminal acts.

The administrative office has available resources addressing Domestic Violence, Dating Violence and Stalking.

THE FLORIDA DEPARTMENT OF LAW ENFORCEMENT

Florida Sexual Offenders and Predators

Information on sexual offenders and Predators can be obtained by contacting The Florida Department of Law Enforcement (FDLE) Sexual Offender & Predator Unit, P. O. Box 1489 Tallahassee, FL 32302 or by phone at (850) 410-8572, toll free at (888) 357-7332 and email at sexpred@fdle.state.fl.us or on the [FDLE website](#).

Information is also available in the United States Department of Justice national sex offender registry: <http://www.nsopw.gov/Core/Portal.aspx>

TITLE IX COMPLIANCE

Title IX Policy Statement

Title IX of the Education Amendments of 1972 is a federal law that prohibits sex- and gender-based harassment, and discrimination in any education program or activity. Title IX states “no person in the United States shall, on the basis of sex, be excluded from participation in, be denied benefits of, or be subjected to discrimination under any education program or activity receiving federal financial assistance.” Sexual harassment, sexual assault, sexual misconduct, dating and domestic violence, and stalking are prohibited under Title IX.

CI not only complies with the letter of Title IX’s requirements, but also endorses the law’s intent and spirit. CI is committed to compliance in all areas addressed by Title IX, including access to higher education, career education, math and science, standardized testing, athletics, education for pregnant and parenting students, learning environment, and technology, as well as sexual harassment.

The purpose of this policy is to ensure that CI’s policies are applied and interpreted in ways consistent with Title IX and other applicable laws.

It is the policy of CI to provide educational, preventative and training programs regarding sexual or gender-based harassment; to encourage reporting of incidents; to prevent incidents of sexual and gender-based harassment from denying or limiting an individual’s ability to participate in or benefit from CI’s programs; to make available timely services for those who have been affected by discrimination, and to provide prompt and equitable methods of investigation and resolution

to stop discrimination, remedy any harm, and prevent its recurrence. Violations of this Policy may result in the imposition of sanctions up to, and including, termination, dismissal, or expulsion, as determined by the appropriate officials at CI.

Discrimination

CI prohibits discrimination and harassment based on race, color, creed, religion, sex, gender, national origin, citizenship, ethnicity, marital status, age, disability, sexual orientation, gender identity and gender expression, genetic information, veteran status, or any other status protected by applicable law to the extent prohibited by law.

Title IX Officer

Nichole Walsh

Director of Operations

2900 W Cypress Creek Rd

Suite 7

Ft. Lauderdale FL

954-400-0625

Sexual Harassment

CI defines sexual harassment as unwelcome behavior of a sexual nature that relates to the gender or sexual identity of an individual and that has the purpose or effect of creating an intimidating, offensive or hostile environment for study. This policy applies to all interactions between students and CI faculty members and other faculty, staff, and administrative personnel, and other students.

Conduct alleged to be sexual harassment will be evaluated by considering the totality of the particular circumstances, including the nature, frequency, intensity, location, context, and duration of the questioned behavior. Repeated incidents or a pattern of harassing behavior may be cause for serious corrective action. However, a more serious incident, even if isolated, may be sufficient cause for action under this policy including referral to law enforcement when applicable.

Quid pro quo sexual harassment can occur whether a person resists and suffers the threatened harm, or the person submits and avoids the threatened harm. Both situations could constitute discrimination on the basis of sex. A hostile environment can be created by persistent or pervasive conduct or by a single severe episode. The more severe the conduct, the less need there is to show a repetitive series of incidents to prove a hostile environment. Sexual violence, including rape, sexual assault, and domestic and dating violence, is a form of sexual harassment.

In addition, the following conduct may violate this Policy:

1. Observing, photographing, videotaping, or making other visual or auditory records of sexual activity or nudity, where there is a reasonable expectation of privacy, without the knowledge and consent of all parties.
2. Sharing visual or auditory records of sexual activity or nudity without the knowledge and consent of all recorded parties and recipients.
3. Sexual advances, whether or not they involve physical touching.
4. Commenting about or inappropriately touching an individual's body.
5. Requests for sexual favors in exchange for actual or promised job benefits, such as favorable reviews, salary increases, promotions, increased benefits, or continued employment.
6. Lewd or sexually suggestive comments, jokes, innuendoes, or gestures.
7. Stalking

Other verbal, nonverbal, graphic, or physical conduct may create a hostile environment if the conduct is sufficiently persistent, pervasive, or severe so as to deny a person equal access to CI's programs or activities. Whether the conduct creates a hostile environment may depend on a variety of factors, including: the degree to which the conduct affected one or more persons' education or employment; the type, frequency, and duration of the conduct; the relationship between the parties; the number of people involved; and the context in which the conduct occurred.

Unwelcome Conduct

Conduct is unwelcome if a person:

- (1) did not request or invite it; and
- (2) regarded the unrequested or uninvited conduct as undesirable or offensive.

That a person welcomes some sexual contact does not necessarily mean that person welcomes other sexual contact. *Similarly*, that a person willingly participates in conduct on one occasion does not necessarily mean that the same conduct is welcome on a subsequent occasion.

Whether conduct is unwelcome is determined based on the totality of the circumstances, including various objective and subjective factors.

The following types of information may be helpful in making that determination:

Statements by any witnesses to the alleged incident;

Information about the relative credibility of the parties and witnesses;

The detail and consistency of each person's account.

The absence of corroborating information where it should logically exist;

Information that the accused party has been found to have harassed others.

Information that the complainant has been found to have made false allegations against others;

Information about the complainant's reaction or behavior after the alleged incident; and

Information about any actions the parties took immediately following the incident, including reporting the matter to others.

In addition, when a person is so impaired or incapacitated as to be incapable of requesting or inviting the conduct, conduct of a sexual nature is deemed unwelcome, provided that the accused party knew or reasonably should have known of the person's impairment or incapacity. The person may be impaired or incapacitated as a result of drugs or alcohol or for some other reason, such as being asleep or unconsciousness. An accused party's impairment at the time of the incident as a result of drugs or alcohol does not, however, diminish his or her responsibility for sexual or gender-based harassment under this Policy.

Gender-Based Harassment

Gender-based harassment is verbal, nonverbal, graphic, or physical aggression, intimidation, or hostile conduct based on sex, sex-stereotyping, sexual orientation or gender identity, but not involving conduct of a sexual nature, when such conduct is sufficiently severe, persistent, or pervasive that it interferes with or limits a person's ability to participate in or benefit from CI's education or work programs or activities. For example, persistent disparagement of a person based on a perceived lack of stereotypical masculinity or femininity or exclusion from an activity based on sexual orientation or gender identity also may violate this Policy.

Investigations of Complaints

A complaint that a student, staff or faculty member has committed sexual harassment or engaged in nonconsensual sexual activity may be made to the Title IX Compliance Officer, or a staff or faculty member. CI will conduct an investigation as appropriate under the circumstances.

The investigatory process involves interviewing the parties involved and any witnesses while gathering documentary or other evidence. In cases involving alleged criminal conduct, the complainant may file a criminal complaint with the local police department. A complainant need not pursue a criminal complaint in order to seek or to hold the accused responsible through CI's Ethical Code of Conduct. As soon as possible, the complainant and the accused will be offered appropriate assistance as deemed appropriate.

Based on the outcome of the investigation, the Title IX Officer or designee will determine if there is sufficient cause to proceed with the complaint. If so, the Title IX Officer or designee will arrange for an informal resolution conference with the accused (complainants do not attend informal resolution meetings but are apprised of the meeting's outcome). If the accused does not accept responsibility for the allegations and/or the proposed sanction(s), the Title IX Officer or designee will determine if the evidence warrants a formal hearing before the Grievance Committee.

The exact nature of the responsive action depends on the circumstances, but may include discipline up to and including suspension or dismissal from CI if a student, staff or faculty who is found to have violated CI policies.

Implementing Provisions/Policies

CI will take appropriate action (i.e., an investigation, adjudication and disciplinary and remedial/corrective steps) in response to a complaint made pursuant to the complaint policies/procedures listed above. CI will make every effort to handle complaints and investigations with sensitivity to both the rights of the person who complains and the rights of the accused.

CI handles complaints discreetly and attempts to maintain privacy throughout the investigatory process, to the extent feasible and appropriate under the circumstances. However, in order to conduct an investigation, it is generally necessary to discuss the allegations with the accused and other potential witnesses. Additionally, CI may have legal obligations to disclose information to law enforcement or in the context of legal proceedings.

Complaints may be made anonymously. While CI endeavors to investigate all complaints, including anonymous complaints, the nature of anonymous complaints makes investigation, determination, and remediation more difficult and, at times, impossible. Further, while CI attempts to protect the identity of complainants who do not wish to be identified, this may not always be possible.

In appropriate cases as determined by CI, conflict resolution may be possible. This is permitted only where both the complainant and accused voluntarily agree to participate, and either party may terminate informal resolution attempts and commence formal grievance procedures at any time prior to reaching a mutually acceptable resolution. Depending on the circumstances, a mediated resolution may not necessarily involve face-to-face discussions between the complainant and the accused. Certain cases are not appropriate for conflict resolution, such as complaints of particularly egregious sexual harassment or cases involving sexual assault or violence.

Occasionally, an individual makes a complaint and later wishes to revoke or discontinue the investigation or adjudication process. Similarly, it may occur that someone other than the victim reports an incident, and the victim declines to participate in the investigation or adjudication process. In other instances, complaints may be received anonymously and/or the victim may not wish to be personally identified. CI endeavors to respect the wishes of a complainant to either not be identified and/or not participate in the process. In these situations, CI attempts to investigate and address complaints in accordance with the complainant's wishes.

In determining whether sex discrimination, sexual harassment or sexual misconduct occurred, CI does not apply the criminal standard of "beyond a reasonable doubt," nor do formal court rules of evidence apply. Instead, CI uses a "preponderance of the evidence" standard, and CI

may consider any evidence it deems relevant. A “preponderance of the evidence” means the evidence which is of greater weight or is more convincing than opposing evidence such that it is “more likely than not” that an act occurred.

If the applicable investigatory or adjudicatory process allows for parties to offer witnesses and evidence, the complainant and the accused will have an equal opportunity to do so. The complainant and the accused will be informed in writing of the outcome of the complaint, to the extent permitted by law. An accused who is a student may appeal the outcome to an impartial decision maker. An employee who is deemed guilty shall have whatever rights are granted by law. The particular method and grounds for appeal are explained in the student policies listed above.

CI endeavors to resolve complaints promptly. Ordinarily, the investigative stage will take no longer than sixty (60) calendar days from the time the complaint is received. In exceptional circumstances (including but not limited to especially complex cases or when CI is not in session), it may be necessary to extend these timelines. If that occurs, the parties will be informed of the expected timeline for completion.

CI prohibits retaliation against any individual who in good faith makes a complaint of sexual discrimination, sexual harassment, or sexual misconduct or participates as a witness in a proceeding under this or any other CI policy. Retaliation is also unlawful pursuant to Title IX and other laws.

A statement of current policies concerning the sexual assault prevention program and the procedures that are followed:

CI Notice of Petitioners Rights Under the Violence Against Women Act

No person in the United States shall, on the basis of sex, be excluded from participation in, be denied the benefits of, or be subjected to discrimination under any program or activity receiving Federal financial assistance.

CI not only complies with the letter of Title IX's requirements but also endorses the law's intent and spirit. CI is committed to compliance in all areas addressed by Title IX including access to higher education, career education, math and science, standardized testing, athletics, education for pregnant and parenting students, learning environment, and technology, as well as sexual harassment.

Sexual harassment and sexual violence are types of sex discrimination. Other acts can also be forms of sex- based discrimination and include dating violence, domestic violence, and stalking. As such, should you report a form of sex-based discrimination, CI wants to inform you of our policy and procedures that address sexual assault, domestic violence, dating violence, and stalking, whether the incident occurs on or off campus as well as your rights, and CI's responsibilities.

As a complainant of sexual assault, dating violence, domestic violence or stalking, you will receive a full copy of our institution's Title IX Policy. This policy has procedures in place that serve to be sensitive to those who report sexual assault, domestic violence, dating violence, and stalking. These procedures include our right to inform you of your rights to file criminal charges as well as the availability of medical, counseling, and support services. We also offer additional remedies to prevent contact between a complainant and an accused party. The policy also addresses possible sanctions and interim and/or long-term protective measures that CI may impose.

Definitions

Consent

Consent is defined in Florida as “intelligent, knowing, and voluntary consent and does not include coerced submission. Consent shall not be deemed or construed to mean the failure by the alleged victim to offer physical resistance to the offender.” (Florida Statute Chapter 794.011)

Sexual Assault

Sexual assault is defined as “an offense classified as a forcible or non-forcible sex offense under the uniform crime reporting system of the Federal Bureau of Investigation.”

Sexual Violence

Sexual violence includes any one incident of:

1. Sexual battery, as defined in Florida Statute Chapter 794.
2. A lewd or lascivious act, as defined in Florida Statute Chapter 800, committed upon in the presence of a person younger than 16 years of age.
3. Luring or enticing a child, as described in Florida Statute Chapter 784.
4. Sexual performance by a child, as described in Florida Statute Chapter 827.
5. Any other forcible felony wherein a sexual act is committed or attempted regardless of whether criminal charges based on the incident were filed, reduced, or dismissed by the state attorney. (Florida Statute Chapter 794.011)

Domestic Violence

Domestic violence includes felony or misdemeanor crimes of violence committed by a current or former spouse of the victim, by a person with whom the victim shares a child in common, by a person cohabitating with or has cohabitated with the victim as a spouse, or by any other person against an adult or youth victim who is protected from that person's acts under the domestic or family violence laws of the jurisdiction.

Domestic Violence means:

Any assault, aggravated assault, battery, aggravated battery, sexual assault, sexual battery, stalking, aggravated stalking, kidnapping, false imprisonment, or any criminal offense resulting in physical injury or death of one family or household member of another family or household member.

A family or household member means spouses, former spouses, persons related by blood or marriage, persons who are presently residing together as if a family or who have resided together in the past as if a family, and persons who are parents of a child in common regardless of whether they have been married.

With the exception of persons who have a child in common, the family or household members must be currently residing or have in the past resided together in the same single dwelling unit. (Florida Statute Chapter 741.28)

Dating Violence

Dating violence means violence committed by a person—

- (a) Who is or has been in a social relationship of a romantic or intimate nature with the victim; and
- (b) Where the existence of such a relationship will be determined based on a consideration of the following factors:
 - (i) The length of the relationship
 - (ii) The type of relationship
 - (iii) The frequency of interaction between the persons involved in the relationship

Dating violence means violence between individuals who have or have had a continuing and significant relationship of a romantic or intimate nature.

The existence of such a relationship shall be determined based on the consideration of the following factors:

1. A dating relationship must have existed within the past 6 months.
2. The nature of the relationship must have been characterized by the expectation of affection or sexual involvement between the parties.
3. The frequency and type of interaction between the persons involved in the relationship must have included that the persons have been involved over time, and on a continuous basis during the course of the relationship.

The term does not include violence in a casual acquaintanceship or violence between individuals who have engaged in ordinary fraternization in a business or social context.

Stalking

Stalking means engaging in a course of conduct directed at a specific person that would cause a reasonable person to fear for his or her safety or the safety of others; or suffer substantial emotional distress.

Credible Threat

Credible threat means a verbal or nonverbal threat, or a combination of the two, including threats delivered by electronic communication or implied by a pattern of conduct, which places the person who is the target of the threat in reasonable fear for his or her safety, or the safety of his or her family members or individuals closely associated with the person, and which is made with the apparent ability to carry out the threat to cause such harm. It is not necessary to prove that the person making the threat had the intent to actually carry out the threat. The present incarceration of the person making the threat is not a bar to prosecution under this section.

Cyber Stalk

Cyber stalk means to engage in a course of conduct to communicate, or to cause to be communicated, words, images, or language by or through the use of electronic mail or electronic communication, directed at a specific person, causing substantial emotional distress to that person and serving no legitimate purpose. A person who willfully, maliciously, and repeatedly follows, harasses, or cyber stalks another person commits the offense of stalking, a misdemeanor of the first degree, punishable as provided in Florida Statutes 775.082 or 775.083. A person who willfully, maliciously, and repeatedly follows, harasses, or cyber stalks another person and makes a credible threat to that person commits the offense of aggravated stalking, a felony of the third degree, punishable as provided in Florida Statutes 775.082, 775.083, or 775.084.

Bystander Intervention

A bystander is someone other than the victim who is present when an act of dating violence, domestic violence, stalking, or sexual assault is occurring or when a situation is occurring in which a reasonable person feels as though some protective action is required to prevent sexual assault, dating violence, domestic violence, or stalking. Bystanders, if active, can prevent harm or intervene before a situation gets worse.

Reporting sexual assault, dating violence, domestic violence, or stalking

After an incident of sexual assault or domestic violence, the victim should consider seeking medical attention as soon as possible at a local hospital that will supply a physical evidence recovery collection kit. In Florida evidence may be collected even if you chose not to make a report to law enforcement. A victim's name and identifying information will be withheld from the public and press in accordance with the Florida Public Records Law. It is important that a victim of sexual assault not bathe, douche, smoke, change clothing or clean the bed/linen/area where they were assaulted if the offense occurred within the past 96 hours so that evidence as may be necessary to the proof of criminal activity may be preserved. In circumstances of sexual assault, if victims do not opt for forensic evidence collection, health care providers can still treat injuries and take steps to address concerns of pregnancy and/or sexually transmitted disease.

Victims of sexual assault, domestic violence, stalking, and dating violence are encouraged to also preserve evidence by saving text messages, instant messages, social networking pages, other communications, and keeping pictures, logs or other copies of documents, if they have any, that would be useful to CI's hearing boards/investigators or police. Although CI strongly encourages all members of its community to report violations to law enforcement, it is the victim's choice whether or not to make such a report, and victims have the right to decline involvement with the police.

To report an incident involving a sexual assault, domestic violence, stalking or dating violence, contact the Title IX Coordinator:

Tamecia Scott

President

2900 W Cypress Rd Suite 7

(954)-400-0624

tscott@ichancellor.edu.com

In Florida, a victim of domestic violence, dating violence, sexual assault or stalking has the following rights:

1. A law enforcement officer who investigates an alleged sexual battery shall:
 - a. Assist the victim in obtaining medical treatment, if medical treatment is necessary as a result of the alleged incident, a forensic examination, and advocacy and crisis-intervention services from a certified rape crisis center and provide or arrange for transportation to the appropriate facility.
 - b. Advise the victim that he or she may contact a certified rape crisis center from which the victim may receive services.
 - c. Prior to submitting a final report, permit the victim to review the final report and provide a statement as to the accuracy of the final report.
2. The law enforcement officer shall give the victim immediate notice of the legal rights and remedies available to a victim on a standard form developed and distributed by the Florida Council Against Sexual Violence in conjunction with the Department of Law Enforcement. The notice will include the resource listing, including telephone number, for the area certified rape crisis center as designated by the Florida Council Against Sexual Violence.

A person who is the victim of sexual violence or the parent or legal guardian of a minor child who is living at home who is the victim of sexual violence has standing in the circuit court to file a sworn petition for an injunction for protection against sexual violence on his or her own behalf, or on behalf of the minor child if:

1. The person has reported the sexual violence to a law enforcement agency and is cooperating in any criminal proceeding against the respondent, regardless of whether criminal charges based on the sexual violence have been filed, reduced, or dismissed by the state attorney;
or
2. The respondent who committed the sexual violence against the victim or minor child was sentenced to a term of imprisonment in state prison for the sexual violence and the respondent's term of imprisonment has expired or is due to expire within 90 days following

the date the petition is filed.

Further, CI complies with Florida law in recognizing orders of protection for dating violence, domestic violence, repeat violence, and sexual violence. Any person who obtains an order of protection from Florida or any reciprocal state should provide a copy to their Campus President. A petitioner should then meet with Campus President to develop a **Safety Action Plan**, which is a plan to reduce risk of harm while on campus or coming and going from campus.

This plan may include, but is not limited to: *escorts, special parking arrangements, or other measures to assist the petitioner.*

How to file a restraining order:

Prepare a petition and file the petition with Circuit Court.

1. Petition includes information on the petitioner and respondent, such as, address, employment, children, and description of the respondent.
2. Allegation.
3. Must be described in detail.
4. Relationship to the respondent.
5. Dates of incidents.
6. Reviewed by Judge immediately.
7. If requirements are met.
8. Judge will grant a temporary restraining order.
9. Restraining order will be valid for 15 days.
10. Once order is served to the respondent it will be valid and enforceable.

Court Hearing

1. Scheduled 15 days after filing.
2. Hearing will be extended 15 days if respondent cannot be found. (Temporary restraining order will not be valid or enforceable until respondent is served.)
3. Gather witnesses, and any other evidence to present to the Judge.
4. All documents must be certified under Florida Rules of Evidence, or a live witness must testify at the hearing to document authenticity of the documents.
5. Evidence must relate to the allegation on the petition.

Hearing

1. Respondent does not appear at hearing.
2. Petitioner allowed to present evidence.
3. Ruling will be based on evidence presented.
4. Respondent appears at hearing.
5. Respondent can object to evidence which is based on Florida Rules of Evidence.
6. Respondent can cross-examine witnesses and the petitioner.
7. Petitioner will rest their case.
8. Respondent can introduce evidence.
9. Judge Rules on:
 - a. Custody (if required)
 - b. Visitation (if required)
10. Restraining Order can be for a certain time period or indefinitely.
11. Judge can also deny petition.
12. At any time either the petitioner or respondent can file to remove the Restraining Order.

The Hearing is considered a trial and is applicable to Florida Rules of Evidence. Non-authenticated and hearsay are not allowable at the hearing.

To the extent of the victim's cooperation and consent, all CI offices will work cooperatively to ensure that the petitioner's health, physical safety, work and academic status are protected, pending the outcome of a formal CI investigation of the complaint. Additionally, personal identifiable information about the victim will be treated as confidential and only shared with persons with a specific need to know who are investigating/adjudicating the complaint or delivering resources or support services to the complainant. CI does not publish the name of crime victims nor publish any identifiable information regarding victims in the crime logs. Victims may request that their directory information be withheld by making a request in writing to the campus Registrar.

Disciplinary Procedures Following a Complaint

The investigatory process involves interviewing the parties involved and any witnesses while gathering documentary or other evidence. In cases involving alleged criminal conduct, the complainant may file a criminal complaint with the local police department. A complainant need not pursue a criminal complaint in order to seek, or to hold the accused responsible through CI's Student Code of Conduct. As soon as possible, the complainant will be offered appropriate assistance.

Based on the outcome of the investigation, the assigned Title IX Officer or their designee will determine if there is sufficient cause to proceed with the complaint. If so, the Title IX Officer or the designee will arrange for an informal resolution conference with the accused. Complainants do not attend informal resolution meetings but are apprised of the meeting's outcome. If the accused does not accept responsibility for the allegations and/or the proposed sanction, the Title IX Officer or their designee will determine if the evidence warrants a formal hearing before the Grievance Committee. The exact nature of the responsive action depends on the circumstances, but may include discipline up to and including suspension or dismissal from CI for a student, staff or faculty who is found to have violated CI policies.

CI will take appropriate action i.e., an investigation, adjudication and disciplinary and remedial/corrective steps in response to a complaint made pursuant to the complaint policies/procedures listed above. CI will make every effort to handle complaints and investigations with sensitivity to both the rights of the person who complains, and the rights of the accused.

CI handles complaints discreetly and attempts to maintain privacy throughout the investigatory process, to the extent practicable and appropriate under the circumstances. However, in order to conduct an investigation, it is generally necessary to discuss the allegations with the accused and other potential witnesses. Additionally, CI may have legal obligations to disclose information to law enforcement or in the context of legal proceedings.

Complaints may be made anonymously. While CI endeavors to investigate all complaints, including anonymous complaints, the nature of anonymous complaints makes investigation, determination, and remediation more difficult and, at times, impossible. Further, while CI attempts to protect the identity of complainants who do not wish to be identified, this may not always be possible.

In appropriate cases as determined by CI, conflict resolution may be possible. This is permitted only where both the complainant and accused voluntarily agree to participate, and either party may terminate informal resolution attempts and commence formal Grievance procedures at any

time prior to reaching a mutually acceptable resolution. Depending on the circumstances, a mediated resolution may not necessarily involve face-to-face discussions between the complainant and the accused. Certain cases are not appropriate for conflict resolution, such as complaints of particularly egregious sexual harassment or cases involving sexual assault or violence.

Occasionally, an individual makes a complaint and later wishes to revoke or discontinue the investigation or adjudication process. Similarly, it may occur that someone other than the victim reports an incident, and the victim declines to participate in the investigation or adjudication process. In other instances, complaints may be received anonymously and/or the victim may not wish to be personally identified. CI will respect the wishes of a victim to either not be identified and/or not participate in the process. In these situations, CI attempts to investigate and address complaints in accordance with the victim's wishes.

If a victim wishes to talk about an incident with the assurance that the discussion will be confidential and will not result in an investigation or follow up action, CI will also proceed in this regard.

In determining whether sex discrimination, sexual harassment or sexual misconduct occurred, CI does not apply the criminal standard of "beyond a reasonable doubt," nor do formal court rules of evidence apply. Instead, CI uses a "preponderance of the evidence" standard, and CI may consider any evidence it deems relevant. A "preponderance of the evidence" means the evidence which is of greater weight, or is more convincing than opposing evidence such that it is "more likely than not" that an act occurred.

If the applicable investigatory or adjudicatory process allows for parties to offer witnesses and evidence, the complainant and the accused will have an equal opportunity to do so. The complainant and the accused will be informed in writing of the outcome of the complaint, to the extent permitted by law. An accused who is a student may appeal the outcome to an impartial decision maker. An employee who is deemed guilty shall have whatever rights are granted by law. The particular method and grounds for appeal are explained in the student policies listed above.

CI endeavors to resolve complaints promptly. Ordinarily, the investigative stage will take no longer than 60 calendar days from the time the complaint is received. In exceptional circumstances (including but not limited to especially complex cases, or when CI is not in session), it may be necessary to extend these timelines. If that occurs, the parties will be informed of the expected timeline for completion.

CI prohibits retaliation against any individual who in good faith makes a complaint of sex discrimination, sexual harassment, or sexual misconduct or participates as a witness in a proceeding under this or any other CI policy. Retaliation is also unlawful pursuant to Title IX and other laws.

CI engages in educational programming to prevent domestic violence, dating violence, sexual assault and stalking.

Educational programming consists of primary prevention and awareness programs for all incoming students and new employees and ongoing awareness and prevention campaigns for students and faculty that:

1. Identifies domestic violence, dating violence, sexual assault and stalking as prohibited conduct;
2. Defines what behavior constitutes domestic violence, dating violence, sexual assault, and stalking;
3. Defines what behavior and actions constitute consent to sexual activity in the State of Florida;
4. Provides safe and positive options for bystander intervention that may be carried out by an individual to prevent harm or intervene when there is a risk of domestic violence, dating violence, sexual assault, or stalking against a person other than the bystander;
5. Provides information on risk reduction so that students and employees may recognize warning signs of abusive behavior and how to avoid potential attacks.
6. Provides an overview of information contained in the Annual Security Report in compliance with the Clery Act.

This educational campaign will consist of but not be limited to the distribution of educational materials to new students, participating in and presenting information and materials during employee orientation and through newsletters among other means of distribution through the year. The Office of Student Services also has a directory of services that are available to victims within the community to assist those who have suffered from a criminal act.

Risk Reduction/Warning Signs of Abusive Behavior

No victim is ever to blame for being assaulted or abused. Unfortunately, a person who is the victim of sexual or dating violence is more likely to be re-victimized. Below are some tips to help reduce your risk, to recognize warnings signs of abusive behavior and how to avoid potential attacks.

Warning Signs of Abusive Behavior

Domestic and dating abuse often escalates from threats and verbal abuse to violence. And, while physical injury may be the most obvious danger, the emotional and psychological consequences of domestic and dating violence are also severe.

Warning signs of dating and domestic violence include:

- Being afraid of your partner.
- Constantly watching what you say to avoid a “blow up.”
- Feelings of low self-worth and helplessness about your relationship.
- Feeling isolated from family or friends because of your relationship.
- Hiding bruises or other injuries from family or friends.
- Being prevented from working, studying, going home, and/or using technology (including your cell phone).
- Being monitored by your partner at home, work, or school.
- Being forced to do things you don’t want to do.

Help Reduce Your Risk and Avoid Potential Attacks

If you are being abused or suspect that someone you know is being abused, speak up or intervene.

1. Learn how to look for “red flags” in relationships so you can learn to avoid some of those characteristics in future partners.
2. Consider request for an injunction by your local courts.
3. Learn more about what behaviors constitute dating and domestic violence, understand it is not your fault, and talk with friends and family members about ways you can be supported.
4. Trust your instincts—if something doesn’t feel right in a relationship, speak up or end it.

Sexual Assault Prevention (From Rape, Abuse and Incest National Network – RAINN)

- Try not to leave your drink unattended.
- Only drink from un-opened containers, or from drinks you have watched being made and poured.
- Cover your drink. It is easy to slip in a small pill even while you are holding your drink. Hold a cup with your hand over the top or choose drinks that are contained in a bottle and keep your thumb over the nozzle.
- If you feel extremely tired or drunk for no apparent reason, you may have been drugged. Find your friends and ask them to leave with you as soon as possible.
- If you suspect you have been drugged, go to a hospital and ask to be tested.
- Keep track of how many drinks you have had.
- Try to come and leave with a group of people you trust.
- Avoid giving out your personal information (phone number, where you live, etc.). If someone asks for your number, take his/her number instead of giving out yours.

Traveling Around Campus

- Make sure your cell phone is easily accessible and fully charged.
- Take major, public paths rather than less populated shortcuts.
- Avoid dimly lit places and talk to campus services if lights need to be installed in an area.
- Avoid putting music headphones in both ears so that you can be more aware of your surroundings, especially if you are walking alone.
- Carry a noisemaker on your keychain.
- Carry a small flashlight on your keychain.

As part of CI compliance with the new Campus SAVE Act requirements for prevention and awareness programs that address domestic violence, dating violence and stalking, several relevant brochures are available in the administrative offices. These brochures are from nationally recognized organizations and include awareness and preventive information. These brochures also include help hotlines related to these specific topics.

CI has a sexual assault prevention program that includes, but is not limited to the following:

- If an assault occurs, notify the Campus President immediately
- Do not disturb the crime scene
- Notify local law enforcement officials
- Secure counseling for the victim
- Change the academic schedule if victim requests
- Disciplinary actions include dismissal from CI

A statement of programs available to students and employees regarding campus security personal safety and crime prevention:

The administrative office has a directory of services that are available, within the community, to assist those who have suffered from a criminal act. These services are usually free and are provided by the community. During the orientation of students, faculty and staff, procedures are outlined to cover the reporting of all criminal acts.

TIMELY WARNING POLICY

CI is responsible for issuing timely warnings in compliance with the Clery Act and the Handbook for Campus Safety and Security Reporting 2016 Edition.

The objective of the timely warning is to keep the campus community informed in timely manner related to crimes that represent a threat to the campus community, and to assist in the prevention of similar crimes.

The decision to issue a timely warning shall be decided on a case-by-case basis based on the nature of the crime, and by considering the totality of the circumstances. The timing of the notification shall, in the first instance, be based upon whether the crime is considered a serious or continuing threat to students or employees, and any potential risks related to compromising law enforcement efforts.

Timely Warnings

Timely warnings typically address Clery Act classified crimes: arson, burglary, aggravated assault, criminal homicide, motor vehicle theft, robbery and sex offenses. Timely warnings are not limited to Clery offenses and may also be issued for any other crimes as deemed necessary. Upon receipt of all relevant information, such warnings will, as circumstances warrant, be issued in a manner to best protect the campus community.

Procedures

When a determination has been made that a timely warning of emergency notification is appropriate, the institution will take action to ensure timely notification is sent to the CI community.

Timely warnings may include, but are not limited to, the following: type of crime, time frame and location of the crime, available suspect description and safety tips and information. Depending on situational circumstances, the warning may be e-mailed, posted around campus, provided as a text message or otherwise distributed. If you have any questions or need clarification, do not hesitate to contact the Campus President.

POLICY REGARDING ILLEGAL DRUGS AND ALCOHOL

Chancellor Institute is aware of the dangers posed by the illegal use and abuse of alcoholic beverages and drugs and is committed to firmly abide by and enforce all state, federal and local laws governing the possession, use and sale of alcoholic beverages and drugs, including, but not limited to, the Drug Free Workplace Act of 1989 and the Drug Free School and Community Act of 1989.

Employees and students and employees are prohibited from possessing, selling or using illegal drugs and alcoholic beverages on campus or at any institutional function. Exceptions to this rule with the regard to the use of alcoholic beverages may be made by the President/Chief Executive Officer or designee in specific circumstances.

Students who violate alcohol and drug laws are subject to prosecution by local, state and federal officials, and are subject to disciplinary action under the Student Code of Conduct found in the Catalog.

Employees who violate alcohol and drug laws are subject to prosecution by local, state and federal officials, and are subject to disciplinary action under the College's personnel policies and procedures.

Information on alcohol and drug-related health problems and treatment may be obtained from the Student Services offices.

POLICY REGARDING EMERGENCY NOTIFICATION AND RESPONSE

The purpose of this Emergency Notification and Response Policy (“Policy”) is to establish the College’s responsibilities and procedures for responding to emergency incidents and/or dangerous situations involving an immediate threat to the health or safety of CI College’s students or employees.

Policy

CI College is committed to immediately notifying the campus community of a significant emergency or dangerous situation involving an immediate threat to the health or safety of students or employees occurring on campus. In the event of an emergency situation, the school will use the emergency response and notification procedures and guidelines set forth in this Policy to notify members of the campus community of the emergency situation or immediate threat.

Definitions

Emergency Notification—a communication triggered when there is confirmation of a dangerous situation or emergency with immediate impact to life or property at CI College.

Procedures/Guidelines Emergency Notification

In the event of a campus emergency, inclement weather event, or similar occurrence, the Executive team, in collaboration with IT, will contact the campus community (faculty, staff and students) using the school’s timely warning and emergency notification systems as applicable.

The method(s) used for notification will depend on the seriousness of the incident, as determined by the Executive team. Coordination between the Executive team and IT will occur based on the timeliness of the message needing to be shared.

Communication Methods and Operations

Methods

Emergency notifications will be sent to faculty, staff and students (or a subset of the group). All system directories are updated based on data entered the STARS system and maintained by IT Services of Third Party. Various communication methods are available and include, but are not limited to, the following:

- **Email Alerts:** Most common and usually in the form of a campus safety update.
- **Text Alerts:** Typically used for imminent or more serious incident(s) that may be weather or emergency- related.

In addition to the above, the Executive team may employ other methods for notifying those within the campus community, including, but not limited to, cell phones and other university personnel.

Operations:

- **STARS/NEO** (email, text) should be used if one of the following is true:
 - It is determined that there is an immediate, imminent, and/or ongoing threat to the campus and/or community members, e.g., a building fire, severe weather, gas leak, bomb threat, active shooter, chemical spill, intruder/sexual assault.
 - An event external to Chancellor Institute campus occurs that causes a campus-wide reaction: campus is locked down, evacuated, etc., e.g., police request campus lockdown due to external incident.
- When an incident is not deemed a threat, the proper mix of communications channels will be decided by the Executive team on a case-by-case basis.
 - A targeted* use of NEO may be deemed necessary.

Specifically, if the incident creates fast-moving misinformation via word of mouth and/or social media, the Executive team may recommend an approach to address the rumors and reduce possible panic.

Additionally, school-wide email should be used in conjunction with other communications channels. If Chancellor NEO is used, the campus-wide email should be held until the incident is over.

**A targeted deployment can also be used when an incident has occurred that, although initially believed to be a threat to the campus community, is quickly determined to be a false alarm.*

School's Community

Official information will be made available as quickly as possible to the entire campus community via the communication vehicles mentioned above. The Executive team along with IT, will be prepared to issue the following types of alerts to the school's community:

Emergency Notifications:

Used to immediately notify the campus community upon confirmation of a significant emergency or dangerous situation involving an immediate threat to the health or safety of students or employees occurring on campus. The message would go to all emails of any students or employees. Two emergency notices include: Emergency Alert: email & text message alert when there is imminent danger.

Weather Alert:

Text message alert about severe weather and/or weather closures.

Timely Warning Alerts:

Depending upon the incident, this type of alert will be sent for Clery Act crimes reported to the local law enforcement occurring in specific geographical areas and representing a serious and/or continuing threat to students and employees, e.g., a robbery when no suspect is in custody.

If a text message alert is issued, alerts will also be sent via e-mail and in any other way deemed appropriate given the circumstances.

Means of notification may also occur, including dissemination of the notification to off-campus emergency contacts (i.e., Fort Lauderdale Police Department, fire rescue, etc.), the media, parents/guardians, or other methods designed to effectively notify the campus and broader community.

Title of the Person(s) and Organization carrying out the above tasks are as follows:

Campus Safety team:

- President and Chief Executive Officer
- Financial Aid Coordinator
- Student Support Specialist
- Evening Security (if applicable)

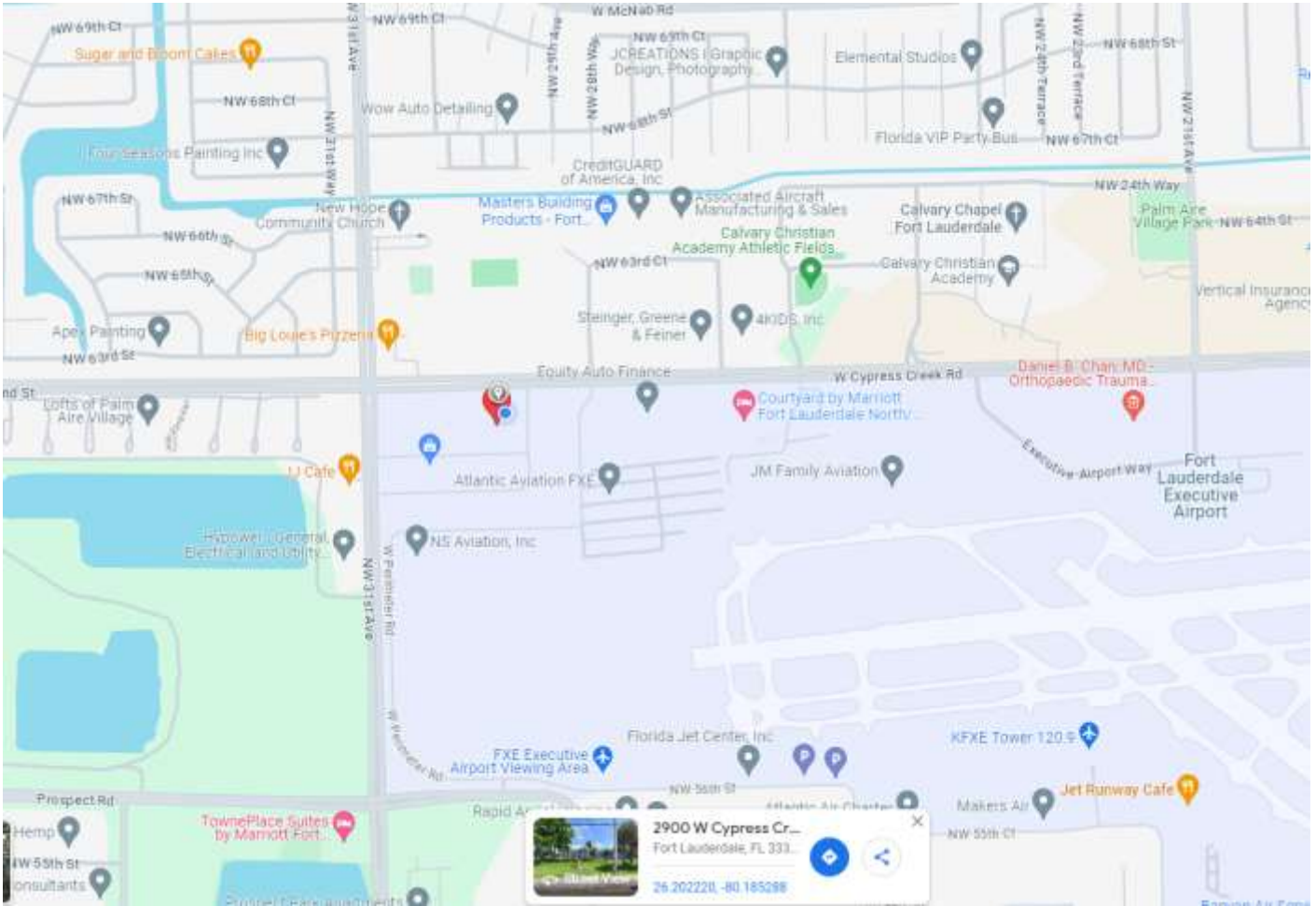
A responsibilities chart for the key members has been established for critical incidents as well as the protocol for the response.

School's procedures to test the emergency response and evacuation procedures:

The school will administer two tests per year by the emergency notification system. The school will administer at least one test of its evacuation procedure.

The tests will be documented and kept in a log in the Student Services Office.

MAP



Campus Crime Statistics

(Reported in accordance with Uniform Crime Reporting procedures and the Jeanne Clery Disclosure of Campus Security Policy and Crime Statistics Act)

Clery or VAWA Criminal Offenses	On campus 2022	On Public Property 2022	On campus 2023	On Public Property 2023	On Campus 2024	On public property 2024	
Murder/non-negligent manslaughter	0	0	0	0	0	0	*** CI does not have any Non-Campus Buildings or Residential Facilities***
Negligent manslaughter	0	0	0	0	0	0	
Rape	0	0	0	0	0	0	
Fondling	0	0	0	0	0	0	
Incest	0	0	0	0	0	0	
Statutory Rape	0	0	0	0	0	0	
Robbery	0	0	0	0	0	0	
Aggravated assault	0	0	0	0	0	0	
Burglary	0	0	1	0	0	0	
Motor vehicle theft	0	0	0	0	0	0	
Arson	0	0	0	0	0	0	
Liquor Law Arrests	0	0	0	0	0	0	
Liquor Law Referrals for Disciplinary Action	0	0	0	0	0	0	
Illegal Weapons Possession Arrests	0	0	0	0	0	0	
Illegal Weapons Possession Referrals for Disciplinary Action	0	0	0	0	0	0	
Drug Law Arrests	0	0	0	0	0	0	
Drug Law Referrals for Disciplinary Action	0	0	0	0	0	0	
Domestic Violence	0	0	0	0	0	0	
Dating Violence	0	0	0	0	0	0	
Stalking	0	0	0	0	0	0	
Hate Crimes	<p>***There were no reported Hate Crimes for the 2022,2023 & 2024 reporting period. Any Hate Crime based on the following bias would be included: Race, Religion, Sexual Orientation, Gender, Gender Identity, Disability or Ethnicity/National Origin. ***</p>						*** CI does not have any Non-Campus Buildings or Residential Facilities***
Murder/non-negligent manslaughter							
Rape							
Fondling							
Incest							
Statutory Rape							
Robbery							
Aggravated assault							
Burglary							
Motor vehicle theft							
Arson							
Simple Assault							
Larceny- Theft							
Intimidation							
Destruction/damage/vandalism of Property							
Unfounded Crimes	On campus 2022	On Public Property 2022	On campus 2023	On Public Property 2023	On Campus 2024	on public property 2024	
Total unfounded crimes	0	0	0	0	0	0	